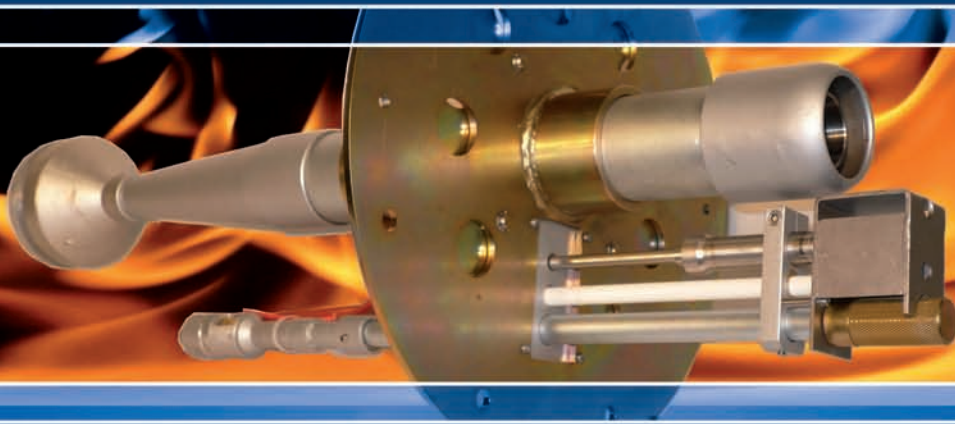




*G.I.E.*

**VB-BURNERS**



**OIL & GAS • CHEMICALS & PETROCHEMICALS • IRON AND STEEL INDUSTRY**

# VB-BURNER

The self-inspiring burners model “VB-Burner” manufactured by G.I.E. srl guaranty a wide range of duty capability and are the best solution for all those natural draft thermal application, where the supply of electrical power is difficult or not available. The available duty ranges are between 23kW up to 3.200 kW for different type of gaseous fuels such as: Natural gas, GPL and other.

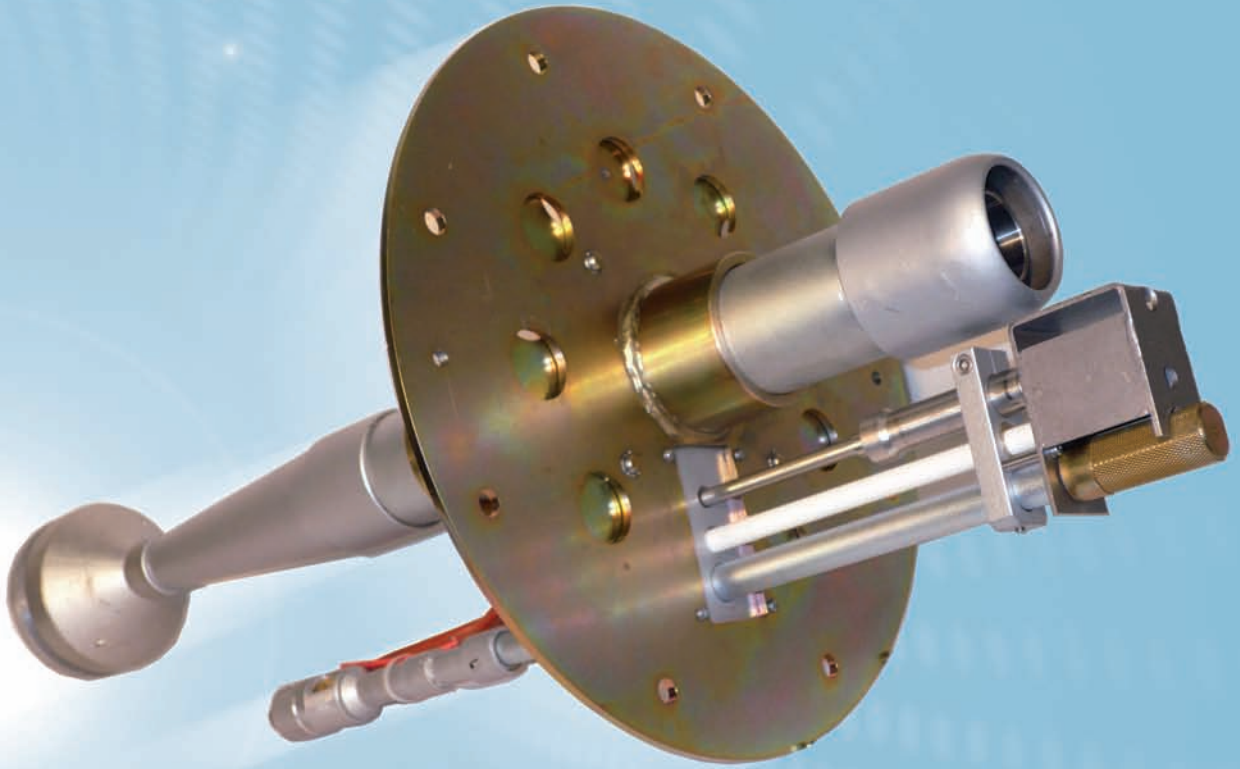
The VB-burner is distinguished for the essential design, consisting in a main fuel gas-gun made of a designed burner tube, which uses common mechanical effect device called “Venturi-tube”. The mechanical effect consists in the flow of the primary burner gas supply through a calibrated jet orifice which is positioned just in front of the constriction of the burner tube, through which, due to the pressure increase and gas flow, creates a partial vacuum behind the jet, which sucks the ambient primary combustion air into the burner tube in order to be mixed with the gas. Air-fuel ratio (AFR) can be modulated by screwing the dedicated primary air register. A secondary air register, placed on the burner plate, can also be adjusted to get the appropriate combustion quality and increase of efficiency. Ignition on continuous pilot is provided by a spark igniter, powered by a “common commercial 9Vdc battery”, installed inside an enclosure, which can be for hazardous area execution according to ATEX rules, or non hazardous area waterproof IP execution. The continuous presence of flame on the pilot is monitored by a dedicated thermopile.

Optional accessory for VB-Burner to extend the application is the “Wind box with/without flame arrestor.

If required, G.I.E. srl can design and supply the fuel gas skid, axial fan, local control panel (LCP) and burner management system (BMS) for safe or classified area Zone 1 or 2.



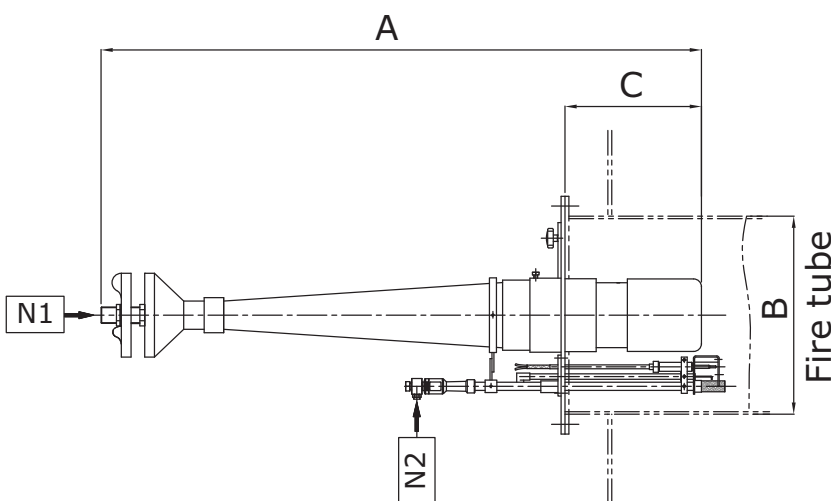
Contact us for more details



## VB BURNERS PERFORMANCE TABLE

VB model	Operating pressure (barg)								
	2	1,75	1,5	1,25	1	0,75	0,5	0,15	
	kW								
<b>VB 1.5</b>	95,3	88,4	81,4	74,4	67,4	54,7	45,9	24,4	
<b>VB 2</b>	174,4	160,5	148,8	136,0	122,1	98,8	69,8	44,8	
<b>VB 2.5</b>	279,1	260,5	238,4	220,9	197,7	162,8	116,3	75,6	
<b>VB 3</b>	407,0	383,7	354,7	325,6	290,7	232,6	162,8	104,7	
<b>VB 4</b>	686,0	651,2	593,0	546,5	488,4	395,3	279,1	174,4	
<b>VB 6</b>	1.593,0	1.511,6	1.395,3	1.255,8	1.116,3	895,3	627,9	395,3	
<b>VB 6 x 2</b>	3.186,0	3.023,2	2.790,6	2.511,6	2.232,6	1.790,6			
<i>Recommended operating range</i>									

## VB BURNERS OVERALL DIMENSION



SIZE	A	B	C
<b>VB 1.5</b>	670	8"	280
<b>VB 2</b>	750	10"	280
<b>VB 2.5</b>	920	12"	300
<b>VB 3</b>	980	14"	320
<b>VB 4</b>	1180	16"	340
<b>VB 6</b>	1540	18"	390

NOTE: dimensions are indicative and for guide purposes only

Contact us for more details



*GIE S.r.l. Società di capitale*

Via Ettore Monti, 9 - 23851 Galbiate (LC) - ITALY  
Phone +39 0341 350509 - Fax +39 0341 350045  
E-mail [info@gie-srl.com](mailto:info@gie-srl.com) - Web [www.gie-srl.com](http://www.gie-srl.com)